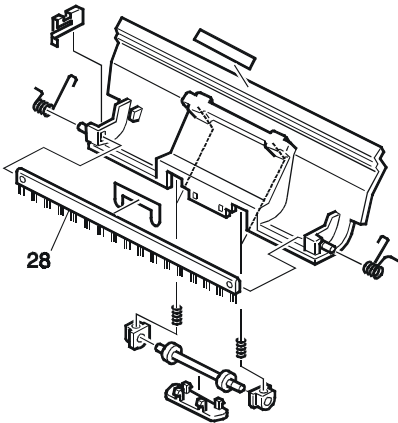


Model: Iris/Lilac 20bin Sorter Stapler		Date: 19-Sep-01	No.: MA834001
Modified Article: Antistatic Brush		Prepared by: M. Tsuyuki	
From: Technical Services Dept., GTS Division			
Reason for Modification:	<input type="checkbox"/> Parts catalog correction <input type="checkbox"/> To facilitate assembly <input type="checkbox"/> Part standardization	<input type="checkbox"/> Vendor change <input type="checkbox"/> To improve reliability <input checked="" type="checkbox"/> Other	<input type="checkbox"/> To meet standards ( )

Old part number	New part number	Description	Q'ty	Int	Page	Index	Note
A552161	A552166	Antistatic Brush	1	X/O	7	28	

The Antistatic Brush has been modified so that the fibers remain firmly attached to the brush, which will ensure that SC410 is not triggered when paper is re-fed from the bypass tray to print the 2<sup>nd</sup> side.

### 3. TRANSPORT SECTION 1 (A834)



### RCL (Japan) Production

MODEL NAME	V/Hz	DESTINATION	CODE	SERIAL NO.
ST32	120, 220-240V, /50,60Hz	USA, Canada. South America Europe, etc	A834-17	H041050001
ST32	120, 220-240V, /50,60Hz	Europe, etc.	A834-26	3S80710001
ST32	220-240V, /50,60Hz	USA, Canada. Europe, etc	A834-55	L042106001